



MUSEUM DESIGN

Creating Museums and exhibitions:
from Big Ideas to Sustainable Venues

www.aqm.nz

aquamarine



Seek insight. Shape the world.

Welcome to Aquamarine.

We are specialists in developing bespoke experience destination.

We are specialists in developing bespoke experience destinations. Our vision is to enrich lives and places by creating ecosystems and immersive experiences that move the world forward.

We combine global market knowledge and local understanding with technical expertise and imagination, to create successful, sustainable, profitable, and engaging developments.

With our clients, we create world-leading spaces, biomes and developments designed to bring the wonder of our natural environment to people around the world in a unique and memorable way, and provide special spaces for people

to live, work and play. We bring these to life through our global network of specialist consultants offering world-leading design, architecture, specialist construction, engineering, project management and operational expertise.

CONTENTS

- Our Philosophy 4
- Making Museums and Exhibitions 5
- Exhibits we create 6
- Our Expertise. 7
- What does it take to design a great museum? 8
- Case Study – Kogalym Museum 9
- Case Study – Northern peoples Museum 10
- Case Study – Smart Library 11
- Case Study – Aqaba Aquarium 12
- Case Study – Edutainment 13
- Integral parts of a design 14
- About us 16
- Our Team 19
- Our work 21
- Associations 23
- Accolades 24
- Our Partners – Ascreen 25



Our Philosophy.

aquamarine

Our mission is to bring a love and wonder to our diverse cultural and natural environments, through creating immersive experiences that surprise, educate and enhance lives.

We adhere to strong principles and practices to ensure sustainable results and better outcomes for all parties involved.

Comprehensive research

We undertake significant research to understand full context of every project, understanding regional specifics, studying how people live, their demands and desires, delving into social, environmental and political factors to create custom and unique solutions.

Honouring culture and nature

We are deeply passionate about the natural world and respectful to local cultures. Sustainable innovation is central to our approach. Well-being of local communities and respectful representation of local cultures is a priority for us.

Creating connection

We collaborate with local experts, communities, governments. We design and operate venues to improve people's lives and strengthen local society development. Our aim is to create a unique asset that generates pride and ownership within the local community.

Making Museums and Exhibitions.

Our strong expertise on every stage of museum development ensures coherence of space, its meaning and operation.

1. Concept Development and Narrative Design

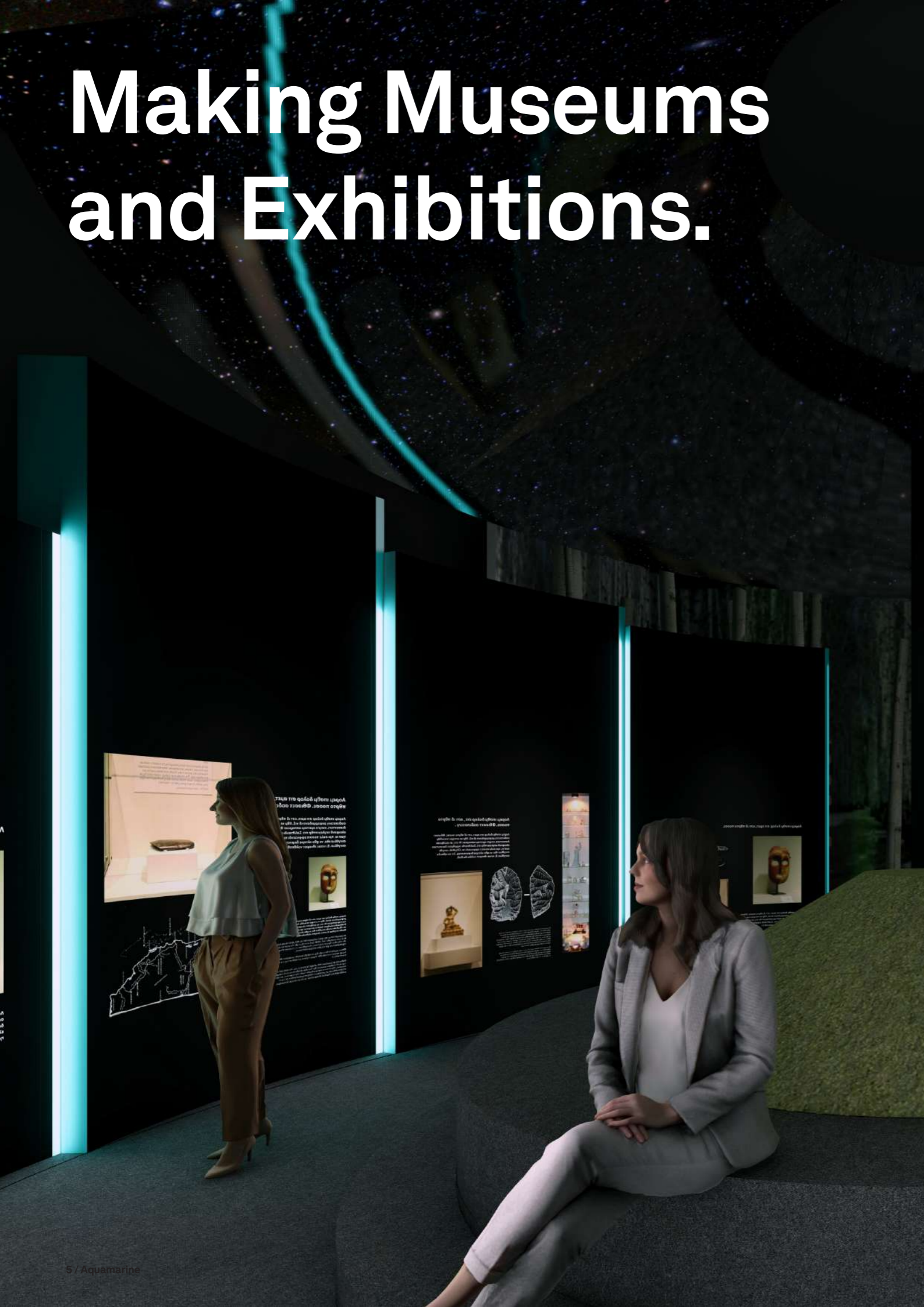
- Concept Creation
- Narrative Design
- Visitor Experience
- Multimedia and digital scenarios
- Exhibition content development
- Collaboration with Science and Art practitioners

2. Architecture, Interior and Exhibition Design

- Architectural and landscaping design
- Exhibit design
- Design supervision
- Project co-ordination
- Construction supervision

3. Strategy and Business model

- Mission and strategy development
- Branding
- Financial model development
- Operations and management consultancy
- Personnel selection and training assistance



Exhibits we create.

- Exhibit design
- Thematic journey
- Graphics and signage
- Visual communication design
- Graphic display design

Aquamarine Projects has a diverse range of expertise and capabilities, covering all facets of architectural, interior and exhibit design and project management. From conceptualization to execution, our multidisciplinary approach ensures that every project is delivered in the best possible way, as intended by the client.

Our years of experience and learnings made along the way allow us to adhere to strong principles and practices to ensure sustainable results and better outcomes for all involved.

Aquamarine's multi-disciplinary network of specialists spans the globe. Because we work all over the world, understanding and adapting to cultural and geographical diversity is central to our approach on every project, and we love the challenge. Collaborative practice and partnership with local communities, governments and investors is a core priority, with a focus on designing to create opportunities that improve people's lives, via employment, education, and entertainment. In every project, our aim is to create a unique asset that generates pride and ownership within the local community



Our Expertise.

When can we join you?

#1 You have an idea of a new museum:

This is the best one, since we can create unique architecture and landscape design to serve the exhibition concept and the mission of the museum

#2 You have an existing museum that has to be upgraded or renovated:

We can see the potential in an existing location, architecture and collection and use it to create a new outstanding place while keeping what has to be preserved

#3: You have a place that has to be turned into a museum:

We will create an architectural solution and provide a socio-cultural design to bring new life to the place

(the whole list to be corrected; the idea is to suggest 3 different customer scenarios)



What does it take to design a great museum?

The most impactful modern museums are driven by a clear concept from the outset. By defining the core idea before the building's architectural design, the museum's structure, interior spaces, and landscape can fully reflect and enhance the central message.

When we are not constrained by existing spaces and can instead build an environment around the story we want to tell, we create the most powerful and meaningful museums.

Because at their core, museums are about conveying meaning.

Because Museums are all about meaning.

Exhibition Design: From Concept to Immersive Experience

Our goal is to communicate a unique message that resonates with the place and its community. This involves in-depth research through field trips, collaborations with local experts, and creative brainstorming to develop original concepts.

For example, in the “Khantykot” project, we designed an exhibition about native peoples for an oil company operating on indigenous land. Our aim was to respect local culture without exoticizing it, while offering oil workers a deeper sense of connection to their boomtown environment.

To achieve this, we transformed the space into a mysterious taiga, a sacred world for the indigenous people but an unfamiliar one for the oil workers. This approach invited visitors to experience the taiga through the cultural lens of the natives.

The exhibition highlighted the hidden beauty of swamps, the significance of upriver sanctuaries, and indigenous perspectives on time and space. It guided visitors through the taiga's diverse natural areas, leading them from a traditional campsite to an expansive taiga landscape park, creating an unforgettable journey that honored both the land and its people.



Museum Complex in Siberia.

Case study →

The Museums housed in this Museum Complex are the Russian State Museum, Numismatics Museum, Oil Museum, a samovar Museum, and an impressive Planetarium.

All the Museums will have creative and innovative Exhibits and Displays with many different subjects from art, economy, geology, culture, and teach the visitor about how important a collective knowledge is to humanity.

Aquamarine role in this project:

- Overall architectural concept and project coordination.
- Architectural design for the exhibitions.

Collaboration with exhibition designers to align their requirements and the building space.

- Interior design.
- Technical design supervision.
- Project coordination with various stakeholders - investors, exhibition owners, government, exhibition designers etc.
- Dome Planetarium exhibit design.

Museum complex has the following museums inside:

- Russian State Museum branch (art museum).
- International Numismatic Club branch.
- Oil Museum.
- Smart Library.
- Planetarium.

We are proud to participate in the project for the world-known Russian State Museum which is the world's largest museum of Russian art, whose main complex is located in the historical center of St. Petersburg. The Russian State Museum will display works of art that can provide glimpses into the changing character of Russia through the centuries - a window into the culture of Russia through the carefully curated objects and works of art.



Cultural center of Northern people.



Case study →

It is important to foster a deeper understanding not only of nature but also of a cultural heritage. One of our projects is the design of a Cultural Center –Khantykot exhibit, which offers a profound exploration of the Khanty culture and their harmonious relationship with the Taiga.

The Khantykot exhibit is a culturally significant and immersive exhibit. This interactive exhibition describes the culture of the Khanty people, indigenous to the Khanty-Mansi region of the Western Siberia. The main theme of the exhibit is the Taiga, a vast forest landscape where man and nature coexist in dialogue rather than dispute. Through the prism of the Khanty culture, visitors are invited to explore and appreciate the balance between humans and their natural environment.

The exhibit is designed to represent the natural landscape of the Eastern Khanty ethnic group, integrating mythological elements and cultural narratives. The space of the Cultural Center is divided into thematic zones, each providing a unique glimpse into different aspects of Khanty life and their interactions with the Taiga.

The exhibition is designed taking into account its target audience, available area and with the deepest respect to the local indigenous people that helped us to identify the required exhibits or their replicas. It is designed to play a crucial role in preserving the cultural heritage of the small nations of the Russian Federation, making it an important act of cultural and political significance.

Drawing inspiration from successful international examples like the Museum of Archaeology and Social Anthropology in Aarhus, Denmark, and the “Echo of the Urals” exhibit in the Museum of Tartu, we have created a space that seamlessly integrates cultural narratives with interactive and educational elements. The exhibit’s design ensures a continuous and fluid experience, allowing visitors to journey through the Taiga and into the heart of Khanty culture without the interruption of walls or barriers.



A modern approach to a public space.

Case study →

Smart- Library

A SMART Library is an innovative, multifunctional space that blends the traditional role of a library with that of a cultural center and a dynamic event venue.

This cutting-edge library focuses on digital and financial literacy, environmental education, local history, and other community services. It hosts a variety of programs, including library lessons, workshops, festivals, competitions, and exhibitions. Visitors are encouraged to collaborate with librarians to organize events and engage in joint projects.

Envisioned as a “city living room,” the SMART Library offers a welcoming space where people can unwind, learn, and connect beyond work, school, or home, making it a hub for productive and enjoyable experiences.

This concept aligns seamlessly with the vision of a modern museum as a vibrant public space and intellectual center.

Aquamarine has successfully designed two such SMART Libraries, reflecting this vision.



A modern approach to a public space

Case study →

Multimedia and digitalization

Aquamarine Projects excels in designing immersive and educational environments that engage audiences and promote a deeper understanding of our world.

A standout example is the Wadi Rum exhibit at the Aqaba Aquarium, which demonstrates our expertise in creating exhibits that seamlessly blend architectural innovation with environmental education. Inspired by Jordan's Khazali Siq Canyon, the Wadi Rum exhibit artfully integrates the region's unique geological and biological features. Through a mix of natural and digital elements, it narrates the fascinating story of life's evolution from water to land.

The exhibit replicates the iconic Wadi Rum landscape, characterized by expansive deserts, stunning sandstone formations, and diverse wildlife. Towering artificial rock structures rise to the ceiling, capturing the grandeur of this UNESCO World Heritage site's canyons and valleys.

With interactive features and digital displays, the design offers visitors a captivating journey through the geological and biological history of the region, fostering a deeper appreciation of this remarkable natural heritage.



A modern approach to a public space.

Case study →

Edutainment

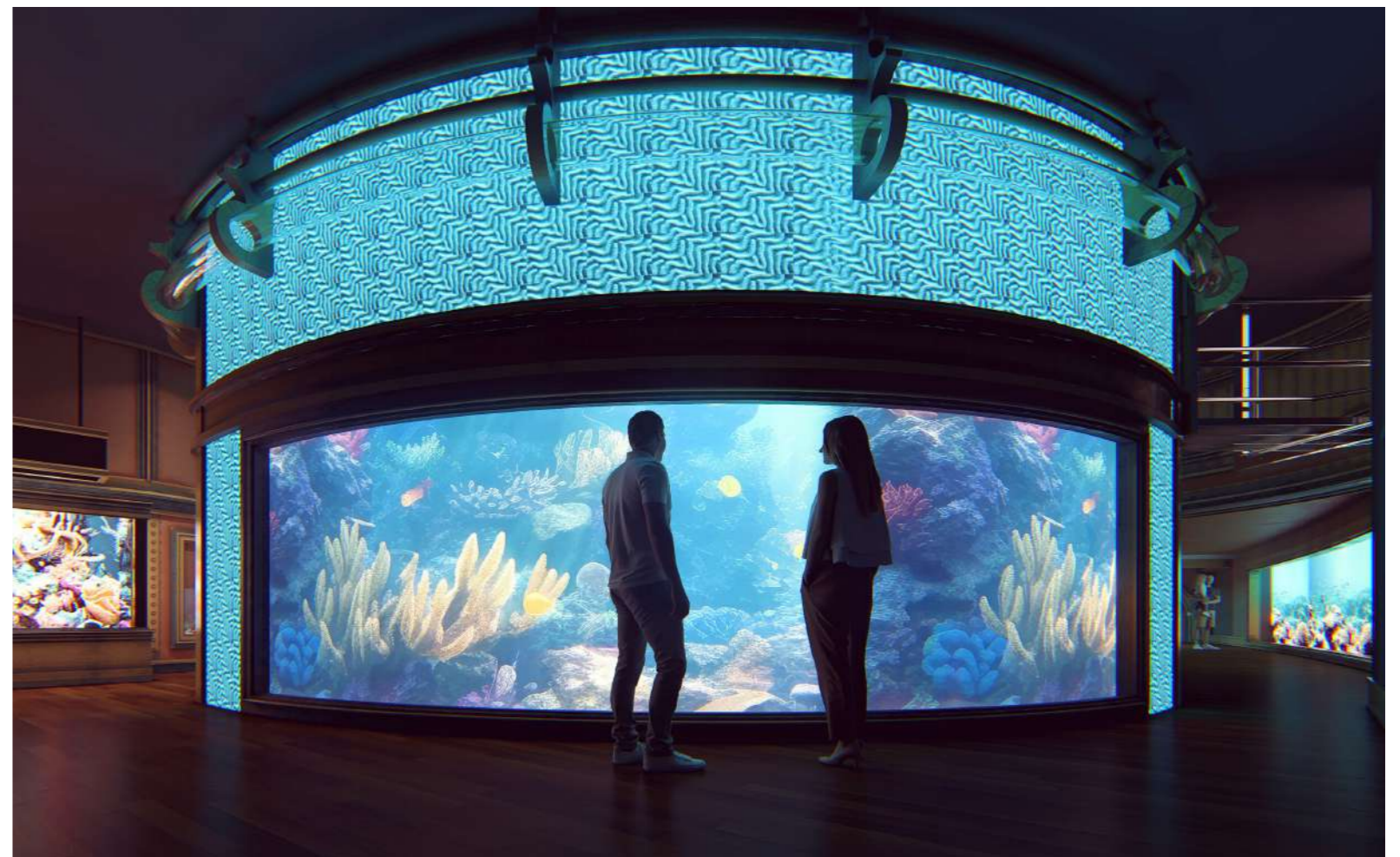
Modern society is highly influenced by technology, and modern technology is constantly running after our attention.

This paradigm affects all aspects of our behaviour; modern museums, exhibitions, schools, oceanariums and other traditional attractions are competing for visitors with mobiles and digital content.

That is why our design incorporates digital approach - to the reasonable extent, so it is not competing with actual exhibits and attractions.

Our aim is not only to entertain the visitors but also to educate them without being intrusive or boring. Educating through entertainment in a subtle and discreet way allows us to create space that is interesting for a larger audience - without creating an “emotional roller coaster”, which can be exciting but will be a distraction from the core purpose of the exhibit. We aim for a balanced and engaging experience that captivates visitors without causing sensory overload.

We ensure that visitors can absorb information and entertain themselves at their own pace, fostering a deeper and more meaningful experience.



Integral parts of a design.

Public Spaces

At Aquamarine Projects, we believe an exhibition experience begins the moment a visitor arrives on site. We design not only the exhibition itself but also the surrounding ticketing areas, public spaces, cafes, and other essential facilities, creating a seamless and immersive experience from entry to exit.

Every aspect of our design is crafted to align with the overarching theme, ensuring that each element contributes to the visitor's anticipation and overall experience from the very first step.

Landscape Design

Landscaping is a vital part of any architectural project, going beyond aesthetics to create an inviting environment that blends seamlessly with the museum's architecture and themes. Thoughtful landscaping, featuring native plants, artistic installations, and well-integrated hardscaping, enriches the visitor journey, extending the exhibit's appeal to the outdoors.

Elements like water features, ambient lighting, seasonal plantings, and other dynamic features not only enhance visual interest but also provide a landscape that evolves throughout the year, becoming an attraction in its own right.

Practicality is at the core of our landscape designs. We aim to create sustainable, harmonious environments that maintain their beauty over time while keeping operational costs manageable. Our goal is to ensure a seamless convergence of the natural and built worlds, resulting in an enduring visitor experience.



Integral parts of a design

Project Economics

A comprehensive feasibility study is the crucial first step in many of our projects. It establishes the context needed to determine whether and how the desired outcome can be achieved, forming the foundation from which the project is designed.

An effective feasibility assessment can redefine a project's direction and is often the deciding factor in its long-term success. This process goes beyond simple number-crunching; it involves a holistic approach that combines intuitive, observational, and analytical elements to provide a complete understanding of the project's potential.

Key considerations, such as staffing levels, capacity, and planned activities, are interconnected and influence every aspect of the project—from concept development to architectural design and everything in between. Our feasibility studies ensure that every factor is aligned, enabling informed decision-making and paving the way for successful project execution.



About us.

Nicholas Traviss

↳ **Aquamarine**
Owner/Director

No stranger to change, Nicholas has transformed Aquamarine several times over since taking on the company his father Bobby started in 1972. In fact, he sees adaptability as the heart of the business itself, evolving to meet diverse markets, and new horizons.

In Aquamarine's home base of New Zealand, we are the first country to see the new dawn each day, and this special spot in the world helps to shape our unique viewpoint. We're lucky to have many incredible natural environments on our doorstep and the natural world is hugely important to us. Perhaps this is what drives us to create projects that help others across the globe share in nature's wonders too.

We don't shy away from a challenge. We work with clients and communities in unique regions all over the world to help them build legacies and landmarks.



Two Generations of Innovation, 47 years in business, 1100+ projects.

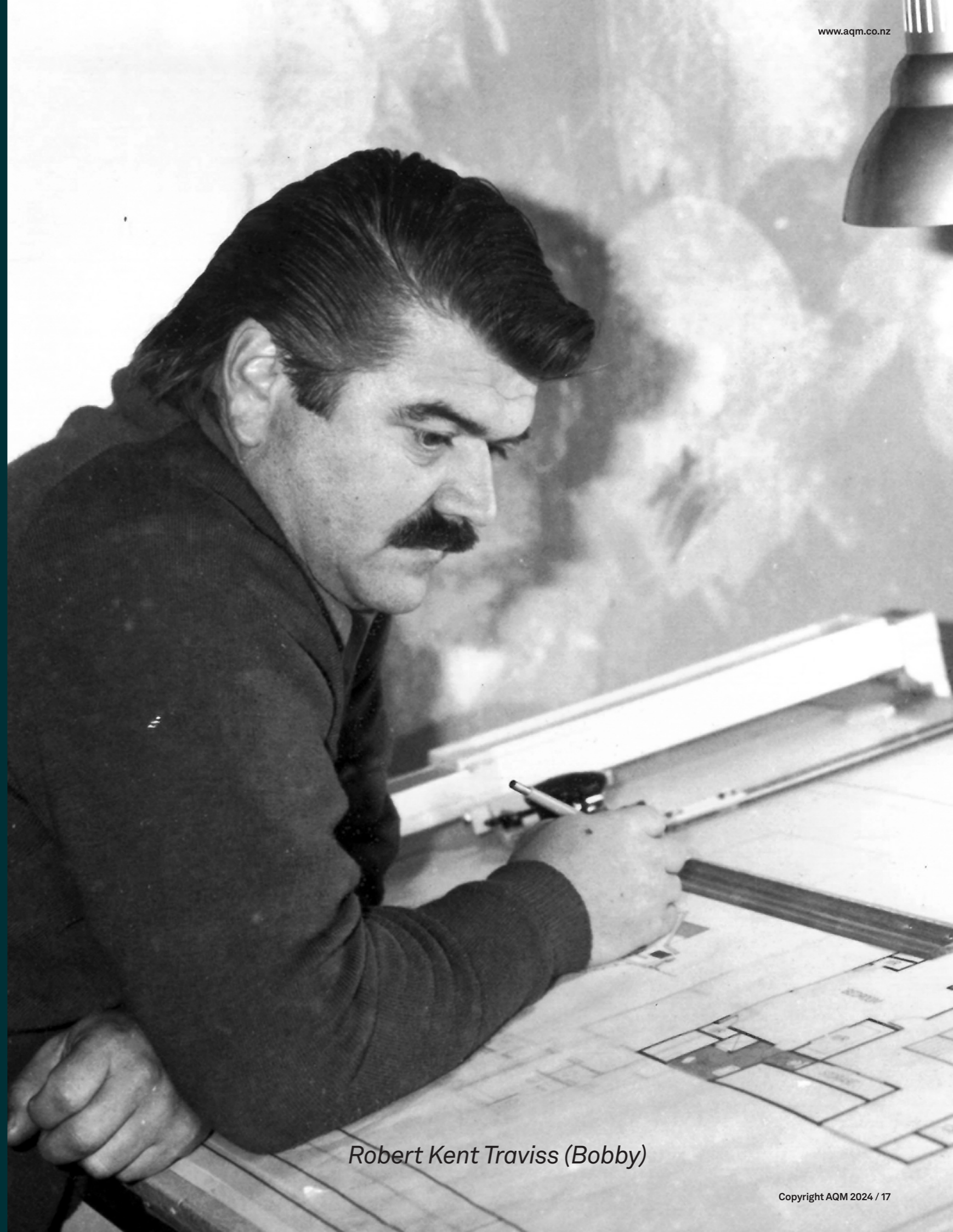
Bobby Traviss started R.K. Traviss Design in 1972, in the Bay of Islands, New Zealand. Since our inception, Aquamarine has evolved into an international design and project consultancy.

From our early focus on architecture, to our specialization in aquariums, to our current focus on multi-feature bespoke developments and integrated biomes – we have always been passionate about enhancing human experience within built environments.

Throughout our evolution, we have stayed true to our roots – holding onto a respect for our natural environment, a commitment to outstanding delivery in true partnership with our clients, and a sensitivity to how our work can impact and improve lives.

Today with clients spanning almost every continent, Aquamarine consistently emphasises building a group of like-minded professionals across the globe to support their vision.

With the combined knowledge and technical expertise this approach enables, Aquamarine has displayed an unprecedented ability to interpret the needs, contexts and business cases of their international clients, and in turn, produce sustainable, inspiring and change-provoking solutions.



Robert Kent Traviss (Bobby)

History.

1972

Bobby Traviss founds R.K. Traviss Design in Bay of Islands New Zealand.

2002

Our second era begins, as Nicholas joins his father in the business, and R.K. Traviss Design becomes Traviss Design.

2006

Bobby passes, and leaves his legacy to Nicholas, as the business continues to grow and diversify.

2012

Aquamarine Projects embarks on a number of diverse nature-based entertainment projects including nature parks, water parks, botanic gardens and discovery centres.

2024

Aquamarine Projects diversifies into Tourism Masterplan and Environmental planning projects, Wellness Centers and also creates 'Worldtree', a new world-first concept.

Aquamarine acquires Marinescape Intellectual Property over its 40 year history as one of the Aquarium Industries founding members.

1972 - 2002

30 years marks 977 individual projects completed in New Zealand's Northland Region

2002 - 2012

Traviss Design builds an international reputation as an expert consultancy in aquarium design, partnering with other leading Aquarium industry experts on over 150 projects over this time.

2012 - 2019

Traviss Design expands into Aquamarine Projects – extending beyond aquariums into diverse entertainment and experience precinct projects

2010 - Present

Aquamarine pioneers the new commercial Eco-Aquarium and champions Biome development as the sustainable future of entertainment design.

2019 - 2024

Aquamarine develops Tourism Masterplans with governments in the Asian Region with special emphasis on the preservation of indigenous cultures.

Our team.



Suzanne Burger

Senior Interior Designer

Qualifications: Diploma at the Cape Peninsula University of Technology

Nicolas Burger

Senior Graphic Designer

Qualifications: Bachelor of Arts in Visual Communication – University of Stellenbosch



Chante Betham

General Manager

Qualifications: BMS, Bachelor of Management Studies with a diploma in Marketing & International Business Management, University of Waikato; Certified and Accredited Life Coach.



Alston Koch

Regional Executive and Manager



Carrie Reyden

Marine Biologist and Zoologist

MSc Conservation Biology



Liliya Vinogradova

Zoologist Design Specialist

Qualifications: Altai State Technical University, Institute of Architecture and Design, Master's Degree of Architecture (2022).

Altai State University, Faculty of Arts and Design, PhD in History of Arts (2016).

Altai State Technical University, Department of Foreign Languages, Interpreter in the field of professional communication (2015-2018).

Altai State Technical University, Faculty of Civil Engineering, Engineer (2002-2007).



Frederick James Koch

Koch

Project Manager



Maxim Belyanin

Administrator and Regional Representative

Qualifications: Applied Mathematics and IT (Moscow State University), Negotiations and cross-cultural communications (Open European Academy of Economics & Politics, Prague), E-MBA in Management (Tallinn School of Management),



Tina Borodulina

Social Anthropologist and Cultural Heritage Consultant

A social anthropologist and author of museum and exhibition projects with a strong scientific approach.

Created several edutainment and exhibition concepts for developers, museums and theme parks.

A number of her projects have achieved national and global recognition, including the European Museum of the Year Award special commendation and Golden Mask award.



Craig Worthington

Senior Aquarist and Marine Capture Specialist

Our team.



Karina Akopian
Senior 3D Architectural and
Environmental Designer



**Cecilia van der
Merwe & Amoré
Strauss**

Senior BIM Lead & Senior Draughting
Team Leader



Vladimir Glizer
Engineer and Director and General
Manager for 'BIOMe'



Eugene Kushenko
Engineer and Director of Operations
for 'BIOMe'



Adrian Tolliday
Aquarium Operations Director
Qualifications:
BSc(Hons) Aquatic Biology, University
College of Wales Aberystwyth, 1993-
1996.
Fellow, Royal Society of Biology UK
Project Management Professional,
Project Management Institute.

Our other team members include the following engineering disciplines; Mechanical Engineer, HVAC Project Engineer, Plumbing Project Engineer, Electrical Project Engineer, Low Current Systems Project Engineer, Fire Systems Engineer, Construction and special systems, LSS Engineering systems and Building engineering systems.

Our Specialist team members include the following disciplines; Multifield specialist in plants of different climatic areas, Specialist Aquarist and Curator, Specialist in tropical and subtropical plants, open ground plants, Specialist in aquatic plants, Decorator-artist Artificial landscapes, Specialist in large fish farming systems and exhibit aquariums, Specialist in desert species, turtles, lizards and crocodiles, Reptiles, Specialists in snakes and lizards: Ornithologist and practicing veterinarian, Aquarist Specialist in amphibians, chameleons and lizards, Butterfly and Insect Specialist, Insect and snail specialist.

Central members of the BIOMe team

Sergey Ivanov

Chief engineer technologist. Design and construction of animal, fish and plants life support systems.

Andrey Berdnikov

Engineer. documentation, technical drawings Ekaterina Svetashova: Documentation, technical drawings.

Sergey Grishchenko

Chief Agronomist, specialist in outdoor and indoor plants of different regions.

Irina Kozlova

Agronomist, leading specialist on tropical and subtropical plants

Sergey Chubarov

Agronomist, leading specialist on aquatic plants

Andrey Oppolitov

Specialist in fish farming and creation of aquarium exhibits

Alexander Plyushchev

Senior aquarist, specialist in keeping and breeding of hydrobionts

Yuri Menshikov

Reptile specialist

Mikhail Khalturin

Hydrochemist, biologist.

Irina Bruy

Etymologist, insect specialist

Ekaterina Alekseeva

Veterinarian, ornithologist

Yulia Sozinova

Artist sculptor, decorator. Creation of thematic decorations

Dmitry Gorbatovsky

Technician decorator. Specialist in thematic decorations

Our work.

Since 1973 Aquamarine has been involved in many major developments across the world. Pioneers in the field, we have conceptualised, designed, constructed and managed over a 1000 projects. Here is a summary of our most recent projects.



2023-2025 | Aqaba Aquarium and Marine Science Hub
Aqaba, Jordan



2022 | Daejeon Expo Aquarium
Daejeon, South Korea



2018-2025 | Yaranga Botanical Garden
Kogalym, Russia



2013-2016 | Galactika Entertainment Center
Kogalym, Russia



2022-2025 | Museum of Russia
Kogalym, Russia



2006 | Primorsky Oceanarium
Vladivostok, Russia



2024 | Mambong Tourism Masterplan
Sarawak, Malaysia



2013 | National Aquarium of Malta
Malta



2023-2025 | NRG Residences
Kogalym, Russia



2014 | EMAAR Aquarium & Underwater Zoo
Istanbul, Turkey



2009 | Turkauzoo Aquarium (Sealife Istanbul)
Istanbul, Turkey



2018-2024 | Northern Peoples Museum
Siberia, Russia

Our work.



2020-2024 | Philosophers Stone Residences
Kogalym, Russia



2018 | VGP Marine Kingdom
Chennai, India



2007 | Chiang Mai Zoo Aquarium
Chiang Mai, Thailand



2012 | Sindok Aquarium
Wonson, North Korea



2018-2024 | Galactika Park
Kogalym, Russia



2006 | Neptune Aquarium
St Petersburg, Russia



2007 | Vinpearl Aquarium
Nga Trang, Vietnam



2012 | Eleven Times Square Aquarium
New York, U.S.A.



2013-2016 | Dubai Aquarium & Underwater Zoo
Dubai, U.A.E.



2013-2016 | Galactika Waterpark
Kogalym, Russia



2011 | Greater Cleveland Aquarium
Cleveland, U.S.A.



2016 | Galactika Aquarium
Western Siberia, Russia

Projects under construction (September 2024)

- 2024 Philosophers Stone Residences, Kogalym, Russia
- 2024 Museum of Russia, Kogalym, Russia
- 2024 NRG Residences, Kogalym, Russia

Current projects in development

- 2024 Mambong Tourism Masterplan, Sarawak, Malaysia
- 2024 Astrakhan Ice Center, Russia
- 2024 Bangalore Zoo Aquarium, Bangalore, India
- 2021-2026 Cartagena Aquarium, Colombia
- 2023-2025 Cayman Islands Aquarium, Caribbean

Past projects Conceptualized

- 2015 Blue Hotel Aquarium, Incheon, South Korea
- 2018 Tauranga Aquarium, Tauranga, New Zealand
- 2017 Stonefields Aquarium, Auckland, New Zealand
- 2017 National Aquarium, Napier, New Zealand
- 2020 Jesse's Jungle Childcare, Monaco
- 2016 Itaipu Aquarium, Itaipu, Paraguay
- 2020 Los Cabos Aquarium, Los Cabos, Mexico
- 2020 Cancun Oceanarium, Cancun, Mexico

- 2023 Tarapolewala Aquarium, Mumbai, India
- 2017 Panama Aquarium, Panama City, Panama
- 2017 Phuket Aquarium, Phuket, Thailand
- 2012 Jomtien Aquarium, Jomtien Beach, Thailand
- 2019 Bidong Island Park, Kuala Terengganu, Malaysia
- 2015 Elephant Wildlife Park, Kuala Lumpur, Malaysia
- 2014 Tiaf Childrens Center, Tiaf, Saudi Arabia
- 2012 Port Huron Aquarium, Port Huron, U.S.A.
- 2012 TAT Mall Aquarium, Tehran

Associations.



American Institute of Architects

The largest, most influential network of architects and design professionals with over 98,000 members who share a passion for design, a desire to change the world and a commitment to the highest standards of practice.



IAAPA

International Association of Amusement Parks and Attractions (IAAPA) is the largest international trade association for permanently situated amusement facilities worldwide, and represents more than 6,000 specialty members from more than 100 countries.



AZA

The Association of Zoos and Aquariums (AZA) is a non-profit organization dedicated to the advancement of zoos and aquariums in the areas of conservation, education, science, and recreation. They are leaders in animal care and welfare; conservation; conversation education and professional excellence.



PATA

The Pacific Asia Travel Association (PATA) is a not for profit membership based association that acts as the catalyst for the responsible development of travel and tourism and facilitates meaningful partnerships to enhance the value, quality and sustainable growth of travel and tourism to, from and within the Asia Pacific region.



AMERICAN SOCIETY OF LANDSCAPE ARCHITECTS (ASLA)

ASLA, founded in 1899, is the professional association for landscape architects in the United States, representing more than 15,000 members. Landscape architects lead the planning, design, and stewardship of healthy, equitable, safe, and resilient environments.



U.S. GREEN BUILDING COUNCIL

The U.S. Green Building Council (USGBC) is a non-profit organization dedicated to supporting prosperous, healthy and resilient communities. They are the global leader in green building with a focus on transforming buildings and communities to advance human and environmental wellbeing.

Accolades.



Kogalym Aquarium

Eurasian Regional Association of Zoos and Aquariums Membership

Member since 2018.

The purpose of the Association is to coordinate efforts to improve zoo and aquarium activities and support conservation and breeding of wild animals.



Dubai Aquarium & Underwater Zoo

Tripadvisor Certificate of Excellence 2012

Certificate of excellence following traveler reviews and ratings

World Travel Awards

Middle East Responsible Tourism Award Nominee 2020-2023

World Travel Awards reward and celebrate excellence across all key sectors of travel, tourism and hospitality industries and are recognised globally as the ultimate hallmark of industry excellence



Malta National Aquarium

Quality Assured (QA) Mark by the Malta Tourism Authority

Certification that is testament to the Aquariums exceptional quality and commitment to providing an outstanding customer experience

European Business Award

(EWWR) European Week for Waste Reduction 2023

Dedication to environmental sustainability



Greater Cleveland Aquarium

3rd Annual Parent Choice Award Nominee 2018

Best Rainy Day Out by the readers of Northeast Ohio Parent



Sealife Istanbul

Sea Life Trust Partner

Member of this registered charity working globally to protect the world's oceans and the amazing marine life that lives within them. Inspiring conservation campaigns and funding projects and education programmes that champion the need for plastic-free oceans, sustainable fishing, effective Marine Protected Areas and an end to over-exploitation of marine life.



Galactika Sports and Cultural Complex

Union of Zoos and Aquariums of Russia membership

Member since 2018.

The Union of Zoos and Aquariums of Russia was established to unite all zoological organizations of the country, to create a space for exchange of experience between specialists, as well as for the implementation of large-scale educational and conservation programs that serve one purpose - to preserve the fauna of Russia in all its unique beauty and diversity.

'Golden site' award in 2016

Award for the best Website in the region. Website made by AQM partners.

"Tourism, sport, hunting and fishing" Exhibition diploma
Diploma for high professionalism in presenting itself

Our Partners - Ascreen.

ascreen.ru

Stories + Design + Technology = Emotion

Ascreen, established in 2001 and headquartered in Saint Petersburg, Russia, is a multimedia company specializing in a range of audiovisual solutions. Their offerings include video conferencing systems, automated control products, and software development services. Additionally, Ascreen provides video mapping technologies and distributes related equipment.

'Rise' consists of the central creative team that is part of 'Ascreen'.

'Rise' is a compact and flexible team of creatives. They design museums and exhibitions, showrooms and visitor centres, indoor and outdoor installations.

Rise also works on projects of different scale from stand alone exhibits to large themed parks.

'Rise' blends stories, design and technologies to engage people emotionally and we do it through a mixture of hands-on, minds-on and hearts-on experiences.

'Rise' Team

Evgenii Churuksaev
Creative director

Elena Burdina
Business development manager

Andrey Sheykin
Scientific curator

Vasiliy Komarov
Founder

Evgenia Tranevskaya
Art director

Ivan Zhivotenko
Chief architect



2018-2019 | Lukoil Corporate Museum
Client: Lukoil
Location: Moscow, Russia



2021 | Rusal Showroom
Client: Rusal
Location: St Petersburg, Russia

Our Partners - Ascreen.



2018 | Exhibition 'Space'
Client: Science Park 'Sirius'
Location: St Petersburg, Russia



2018 | Kinetic Ceiling
Client: Leningrad Center
Location: St Petersburg, Russia



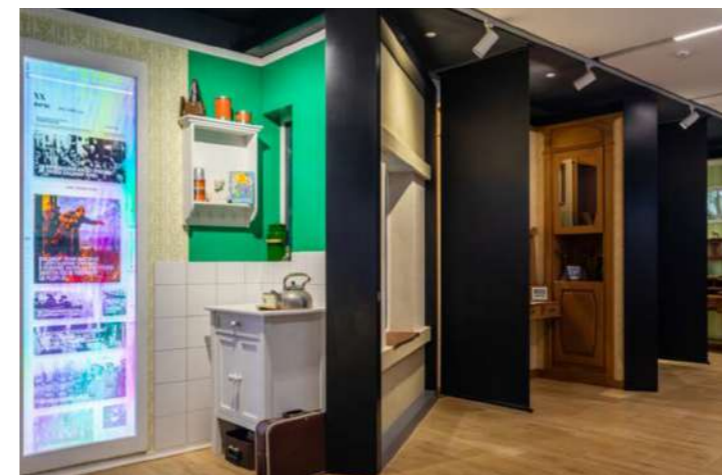
2022 | GPN Showroom
Client: Gasprom
Location: St Petersburg, Russia



2023 | Zhoushan Seafood Experience Center
Client: Internal JV
Location: Zhoushan, China



2021 - 2022 | Dream Masters Creativity Park
Client: SMP Racing Center
Location: Sochi, Russia



2020 - 2021 | Private School
Client: Private School
Location: St Petersburg, Russia



aquamarine

THANK YOU

AQM.NZ

Contact

P. + 64 9 972 2344

nicholas@aqm.nz